

THIN VENEER INSTALLATION



A

Champlain Stone, Ltd.® recommends the use of the LATICRETE® Masonry Veneer Installation System (MVIS™) for the entire Champlain Stone Thin Veneer Collection. Backed by the LATICRETE 25 Year System Warranty – SPD*, the LATICRETE Masonry Veneer Installation System delivers a faster, more accurate platform for Champlain Stone thin veneers and ensures an uncompromised standard of quality.



B

Trimming and Prep

Perhaps the most efficient method for trimming thin veneer is through the use of a 4" angle grinder equipped with a diamond blade* (figure A). Cuts made at an angle from the back (sawn) side at 1/2" depth will allow the stone to be "snapped" with a small hammer along the cut line leaving a natural edge on the front side. Ensure units are clean of laitance, loose concrete, and any film that could impede bond.

Setting

Dampen the stone surface with water. Use a gauging trowel to key a thin coat of LATICRETE Veneer Mortar to cover entire back of the veneer units. Spread additional mortar onto the back of the skim coated veneer sufficient to completely fill the space between the veneer and the substrate when compressed against the substrate (figure B). Press the mortar covered back of the veneer against the substrate at the desired final position. Slide the unit roughly 1" (25 mm) diagonally while maintaining even pressure (figure C).



C

Take care to keep the joints between the stones consistent and to stagger the vertical joints.

Pointing Mortar

After all of the stones have been set, LATICRETE Pointing Mortar can be applied to the joints via a grout bag (figure D) or pointing trowel. Work your way through the field from bottom to top, forcing the mortar into the joints or any voids that may exist. Note that joint treatments vary by region and individual preference. Be sure to take into account the joint mortar depth required by your specific job as you work your way through the field. If any mortar lands on the face(s) of the stone during the course of installation, allow it to dry slightly and then brush or sponge off any residue. When the mortar becomes firm to thumbprint hardness (30 – 60 minutes depending on climate and temperature), trowel, rake, and/or brush to the desired finish. (figure E).



D

Finish with a brush or whisk broom (figure F).



E

DO NOT USE ACIDS OR SOLVENTS.

* See LATICRETE 25 Year Systems Warranty at www.laticrete.com/mvis

Square foot quantities reflect raw material coverage only, exclusive of any manipulation of the stone itself. Final results will vary depending on joint width and installation style.

www.laticrete.com/mvis

Technical Services: 1.800.243.4788 x235

All technical service calls are recorded and returned within a maximum 24 hour timeframe.



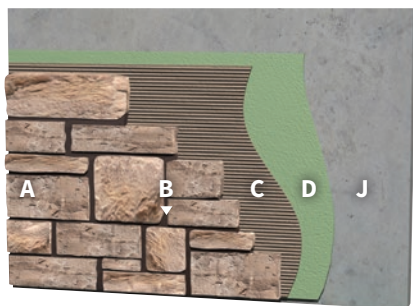
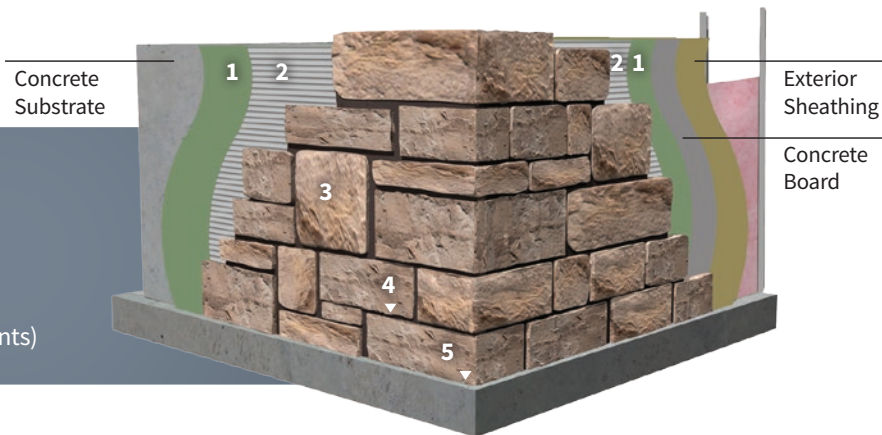
F

THE LATICRETE ADVANTAGE



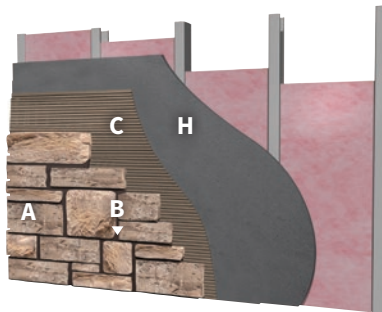
A Complete Installation System
Factory Controlled Quality
Labor and Materials Warranty

1. Waterproofing
2. Adhesive
3. Adhered veneer
4. Masonry Pointing Mortar
5. Flexible Sealant (for movement joints)



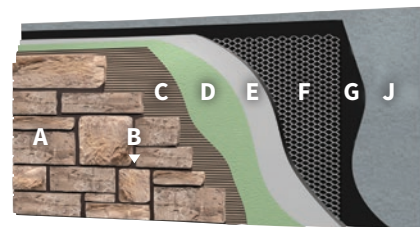
Exterior Wall

Concrete wall – Direct adhered with fluid applied air and water barrier



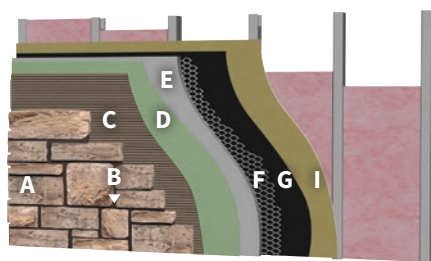
Interior Wall

Framed wall with cement backer board substrate



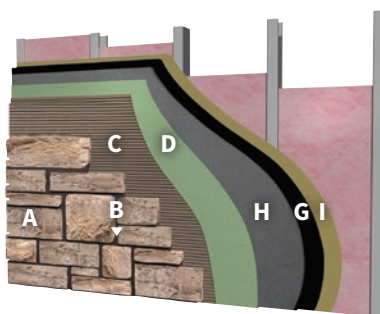
Exterior Wall

Concrete wall – lath with scratch and brown coat



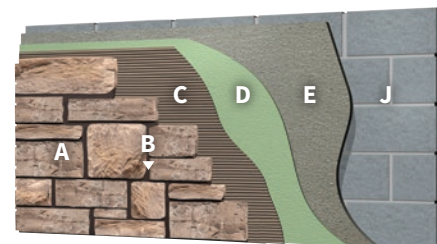
Exterior Wall

Framed wall with exterior rated sheathing – lath with scratch and brown coat



Exterior Wall

Framed wall with exterior rated sheathing – cement backer board substrate



Exterior Wall

Concrete Masonry Unit (CMU) wall with skim coat – Direct adhered with fluid applied air and water barrier

LEGEND

- A. Champlain Stone, Ltd.® Thin Veneer Collection
- B. LATICRETE® Masonry Pointing Mortar
- C. LATICRETE® Veneer Mortar
- D. LATICRETE® Air & Water Barrier
- E. LATICRETE® Premium Mortar Bed
- F. Metal lath, 3.4# galvanized diamond wire lath

- G. Vapor retarder/cleavage membrane type and location per design professional (e.g. 15 lb builders felt or 4 mil polyethylene sheeting)
- H. Cement backer board
- I. Exterior rated sheathing
- J. Concrete or masonry